

BEC PHOSSURE 6 & 12



RAIN OR SHINE, WE HAVE YOU COVERED FOR SURE WITH PHOSSURE

During the summer rainfall in Northern Australia, it often happens that we encounter great lick losses through leaching. This leaching is due to supplements being drenched by rain when fed in uncovered troughs and/or bulk bags in the paddock.

When this happens, the intakes of animals can drop dramatically having an impact on your herd's overall performance.

Although ruminants have the ability to mobilize P from their skeletons and other body organs, these reserves cannot last forever and must be constantly replenished.



PhosSure provides the following key benefits:

- Is weather resistant due to the inclusion of a unique spray-dried molasses by-product.
- Forms a protective layer to limit rain damage and prevent lick losses through leaching.
- Provides phosphorous in the form of highly available **Kynofos 21** (Pre-Caecal Digestibility of 80.2%).
- Increases production and fertility.
- Improves growth and skeletal development.
- Contains increased levels of the most important trace minerals in the correct ratio to phosphorus
- Can be fed to cattle, sheep and goats during the summer or all year round. PhosSure is available as a P12 concentrate that can be mixed 50/50 with salt or fed as is to grazing cattle as well as a ready-to-use P6 supplement. Intake for the PhosSure12/ salt mix and the PhosSure 6 is 100 – 240 g per cattle per day or 18 – 36 g per sheep per day.



BEC Feed Solutions is the exclusive distributor of Yara Animal Nutrition South Africa phosphates in Australia.

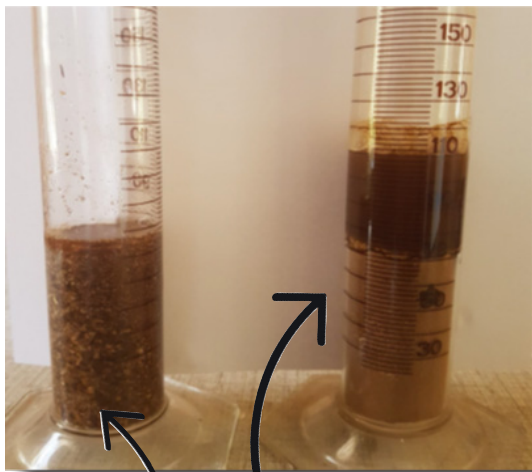
Knowledge grows

PHOSSURE 6 & 12

RAIN OR SHINE, WE HAVE YOU COVERED FOR SURE WITH PHOSSURE

PhosSure 6 and 12 have the following compositions:

| PhosSure 6 | | PhosSure 12 | |
|----------------------|------------------|----------------------|---------------------------|
| Product Properties | Typical Analysis | Product Properties | Typical Analysis |
| Total Phosphorus (P) | 6% (min) | Total Phosphorus (P) | 12% (min) |
| Calcium | 12% (max) | Calcium | 24% (max) typically 13.3% |
| Copper | 300 mg/kg | Copper | 600 mg/kg |
| Manganese | 1200 mg/kg | Manganese | 2400 mg/kg |
| Zinc | 1200 mg/kg | Zinc | 2400 mg/kg |
| Iodine | 30 mg/kg | Iodine | 60 mg/kg |
| Cobalt | 3 mg/kg | Cobalt | 6 mg/kg |
| Selenium | 8 mg/kg | Selenium | 16 mg/kg |



This shows a normal phosphate supplement drenched in water.

PhosSure forms a protective layer to prevent water from entering the product.



PhosSure as fed in the paddock. The protective layer can be seen as well as the dry lick where animals have broken through the layer.

CUSTOMER SERVICE
1300 884 593

50 Antimony Street,
Carole Park Qld 4300, Australia
PO BOX 475, Goodna Qld 4300

becfeed.com

