

# Lactipro®

Aids in the transition from roughage to grain

**Lactipro®** contains a live culture of a patented strain of *Megasphaera elsdenii*, the prominent lactic-acid utilizing bacteria found in the rumen of sheep and lambs fed concentrate based diets.

Lactic acid accumulation (acidosis) decreases rumen pH, which can lead to acidosis:

- Causing damage to the rumen wall,
- Negatively affecting rumen microbiological population,
- Excretion of soapy or watery faeces,
- Decreasing intake,
- Impairing animal performance,
- **Acidosis can cause death in ruminants.**

Sub-clinical acidosis reduces animal performance but often goes un-noticed. Sheep and lambs that have not been exposed to high concentrate diets previously (coming from pasture) or animals rapidly increasing intakes of high concentrate diets are at particular risk of acidosis.



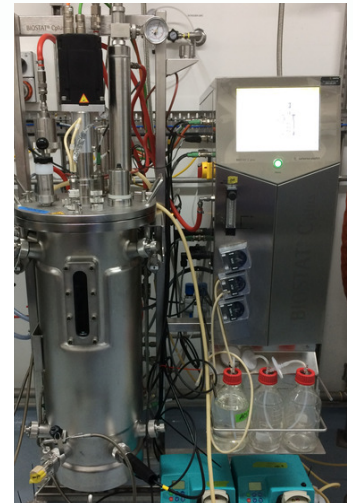
Lactipro® is registered to "aid in the transition from roughage to grain rations by metabolizing lactic acid produced in the gastrointestinal tract where management practices could be expected to result in rumen lactic acidosis" (APVMA No: 64151).

Lactipro® can be used in different ways in the intensive feeding of sheep and lambs:

- To protect against acidosis in feeding programs where intake and transition is difficult to control. (ie feed bins, paddock feeding grain or certain fodder crops).
- As a management tool to increase profitability and/or animal performance by manipulating feeding transition times (ie. accelerated step up programs).

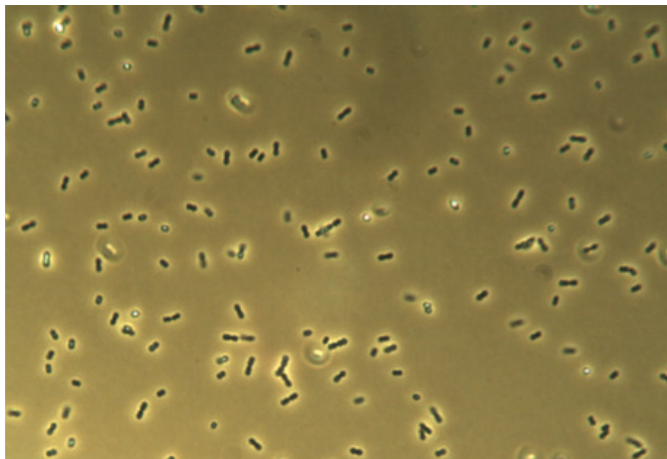
The combination of accelerated step-up programs whilst controlling lactic acidosis may provide the following benefits in lamb feedlots:

- Reduced feed (DMI) to gain ratio or improved efficiency,
- Improved operational efficiency - less time on start-up rations,
- Reduce number of rations in feed program,
- Reduced hay/fibre use,
- Reduced manure output,
- Reduced reliance on in-feed antibiotics to control acidosis.



### How to use

15ml oral drench with Lactipro<sup>®</sup> on induction to the feedlot or the point of transition to grain ration.



Lactipro<sup>®</sup> has been proven to be compatible with other feed additives such as:

Ionophores - Narasin, Salinomycin, Avoparcin, Flavomycin and Monensin.

Antibiotics/Antimicrobials - Aureomycin (chlortetracyclin), Sulfamethazine, Terramycin (oxytetracycline), Tylosin, Virginiamycin, Zinc Bacitracin, Thiopeptin.

BEC Biotech is the supplier of Lactipro<sup>®</sup>, the world's first commercially available, FDA reviewed and APVMA registered *Megaspheera elsdenii* lactic acid-utilizing bacteria.

**All natural**

**Research proven**

**Performance tested**



(07) 3723 9886



info@becbiotech.com.au